



Dear Friend of Interface:

“It was the best of times, it was the worst of times...”
Charles Dickens, *A Tale of Two Cities*

As the passion and commitment of our staff, volunteers, and friends continues to grow and strengthen at Interface Children & Family Services, I would like to express our appreciation for your support and to share with you a brief update as we close out our fiscal year.

It is no surprise that Interface felt the impact of what has been characterized as the worst economic period since the Great Depression. For Interface, this resulted in dramatic funding reductions at the State and County level, which threatened the delivery and continuation of our broad range of services.

As a result, the people we serve were placed in critical, life-threatening situations, increasing the number of calls and requests for help, while impacting our ability to fund assistance. However, our staff’s tireless efforts coupled with the outpouring of generous contributions from the public and business community allows us to say it was “the best of times.”

Perhaps this is summed up by one Shelter client who wrote us a note:

“I wanted to send my personal thanks for all the help that you gave me in my time of need. If it was not for you, no one seemed to care, I would still have been living in my car with no food, shower. It was your compassion for people that I hope that I can forward to others. I will never forget you, or Interface for how they have helped me. I will forever be grateful. THANK YOU!”

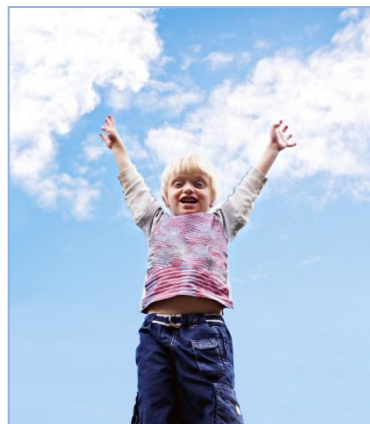


Reflecting on the past year, several notable achievements come to mind that were made possible directly because of your generous support.

- Interface was recognized in the Pacific Coast Business Times as one of the “Top 25” non-profits in our region. While receiving such publicity and accolades is not our goal, it is nice to be recognized and testifies to the quality of staff and services made available to the community.
- Phenomenal community support saved three of Interface’s five domestic violence shelters from closing down in the wake of State funding cuts. These homes are critical in assuring that battered women and their children do not have to return to their batterers when they have no place to live. Faced with the closure of all five transitional shelter homes, one particular donor remarked with determination, “I will not let this happen in my community!”



- Interface's successful development of the Family Resource Center model continues as a means of integrating various family services at one location. Our Santa Paula Center expanded this past year and now offers summer youth programs with a growing number of community youth participants. Likewise, the Oxnard Center added youth crisis services and domestic violence support groups.
- Interface's 2-1-1 Program continues to grow and provides a multi-county resource for service referrals and disaster recovery communication. Calls to our trained phone specialists increased nearly 20% from last year, driven by the economic conditions for the unemployed.
- Interface was selected as one of only two providers in our area for a new Positive Parenting Program. This program, authored in Australia with over twenty independent research studies, is proven to be effective in reducing childhood mental health issues and family conflict and coincides with our mission of strengthening the family unit.
- Interface was selected by the City of Moorpark to join the upcoming Ruben Castro Human Services Center. This facility is currently under construction and in 2011, Interface will become one of five key social service providers at this one-of-a-kind service site in the heart of downtown Moorpark.
- Interface's ability to grow while continuing to deliver quality services was strengthened with two impressive staff additions. Marti DeLaO joined Interface as Director of Fund Development, bringing over twenty years of experience in our community (CSU Channel Islands, Ventura College, and United Way). Diane Kellegrew, PhD, joined us as Director of Strategies from USC, where she has been a professor for over 17 years. Diane's impressive list of credentials includes being appointed by former Governor Grey Davis to a state commission focused on needs and services for families.



Charles Dickens' statement certainly rang true for Interface over this past year. We weathered the storm and have emerged strong and vibrant, serving more than 26,000 individuals. Our strength and foundation rests on the many friends like you that believe and respond to our mission of strengthening children, families and communities. *From all of us at Interface, "thank you!"*

Best Wishes,

Erik Sternad
Executive Director

P.S. Children thrive when families are strong; families thrive when communities are strong. Thank you for helping Interface Children & Family Services as we strengthen all three!